

- Engineered for ease of maintenance and reduced running costs
- Widest range of sensors
- In situ replaceable plug in sensors
- Low cost stock holding
- Reduced replacement costs
- Catalytic
- Electrochemical
- Thermal Conductivity
- Semiconductor
- Infrared
- Replaceable sintered disc
- Harsh environment use
- Corrosion resistant stainless steel housing



Application

Extremely high quality and cost effective sensor providing a wide choice of sensor elements. Compact innovative design ensures fast response to gas with high accuracy measurement.

Designed to operate in a full range of environments from commercial premises through to heavy industrial applications which may require hazardous area sensing. A range of accessories is available enabling the sensor to be used in diverse applications such as HVAC ducting, flowline systems or freestanding open air applications.

Technical Data

Classification

- Certified flameproof
- ATEX / IECEx – Exd IIC T6 Gb (also available: T3, T4, T5)
- CSA/US Class 1 Groups A, B, C, D.
- High temperature versions

ATEX SCS Cert No.

- 03ATEX1176X

CSA/US Cert No.

- LR115863-1

IECEX SCS Cert No.

- IECEx SIRO6.0016X

UK Design patent

- No. 2025396

Housing Material

- Stainless Steel 316 S16

Dimensions

- Body length 32mm dia 33mm

Weight

- 165gms

Cable Exit Mounting Thread

- 20mm 1.5 pitch – options available 25mm, 3/4 NPT

Accessory Mounting Thread

- 33mm 1.25 pitch

Lock Screw

- 3mm-1mm key

Housing Components

- Body ref. 001-002
- End cap ref. 001-003

Ingress Protection

Approved sensor junction boxes

- IP63 + water shield IP65
- Type XDI – EExd IIC T6
Material – aluminium alloy – option - stainless steel
- Type 3000 – EExd IIC T6
Material – Cast Iron – IP66
- Type 9000 – EExe II T6
Material – GRP - IP66



Sensor Detail

ref C105-B

Sensor Device	Gas Type	Range	XDI JB output	3000 JB output	9000 JB output	Performance Data Sheet
Pellistor CAT300A	Hydrocarbons	% L.E.L.	A.B.D	A.B	A	C398
Thermal Conductivity	Hydrocarbons	100% vol	A.B.D	A.B	A	C399
Semiconductor	Refrigerant Gases	0-5000 ppm	A.B.D	A.B	A	C400
Electrochemical	Oxygen	0-30% vol	B.C.D	B.C		C402
Electrochemical	Carbon Monoxide	0-250ppm	B.C.D	B.C		C403
Electrochemical	Hydrogen Sulphide	0-50ppm	B.C.D	B.C		C404
Electrochemical	Sulphur Dioxide	0-10ppm	B.C.D	B.C		C405
Electrochemical	Nitrogen Dioxide	0-10ppm	B.C.D	B.C		C406
Electrochemical	Hydrogen	0-2000ppm	B.C.D	B.C		C407
Electrochemical	Hydrogen Cyanide	0-25ppm	B.C.D	B.C		C409
Electrochemical	Nitric Oxide	0-100ppm	B.C.D	B.C		C410
Electrochemical	Ammonia	0-100ppm	B.C.D	B.C		C411
Electrochemical	Ozone	0-2ppm	B.C.D	B.C		C412
Electrochemical	Ethylene Oxide	0-25ppm	B.C.D	B.C		C413
Infrared	Carbon Dioxide	0-2% vol	B	B		C510
Infrared	Hydrocarbons	% L.E.L. – % vol	B	B		C419

Detector Head



XDI win – F1



XDI – F1



3000 – F1



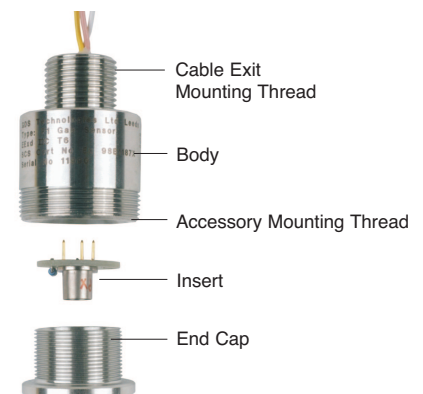
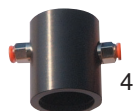
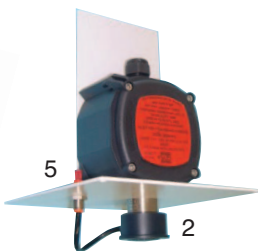
9000 – F1

Electrical Outputs

- A – 3 wire mV
- B – 3 wire 4-20mA
- C – 2 wire 4-20mA
- D – CAN bus

Sensor Accessories

1. 003-010 Collector Cone & Universal Fitting
2. 003-020 Universal Fitting, (Test Gas Applicator/ Spray Deflector)
3. 003-031 Filter - Particulate
4. 008-311 Flow Adaptor
5. 003-090 Duct Mount Kit
6. 003-035 Water Shield



This document is not contractual and the equipment specification may be modified at any time without prior notice.

GDS Technologies Ltd
 Fusion Point, Ash Lane
 Garforth, Leeds LS25 2GA
 Tel +44 (0)113 286 0166
 Fax +44 (0)113 287 8178
 sales@gds-technologies.co.uk
 www.gds-technologies.co.uk

