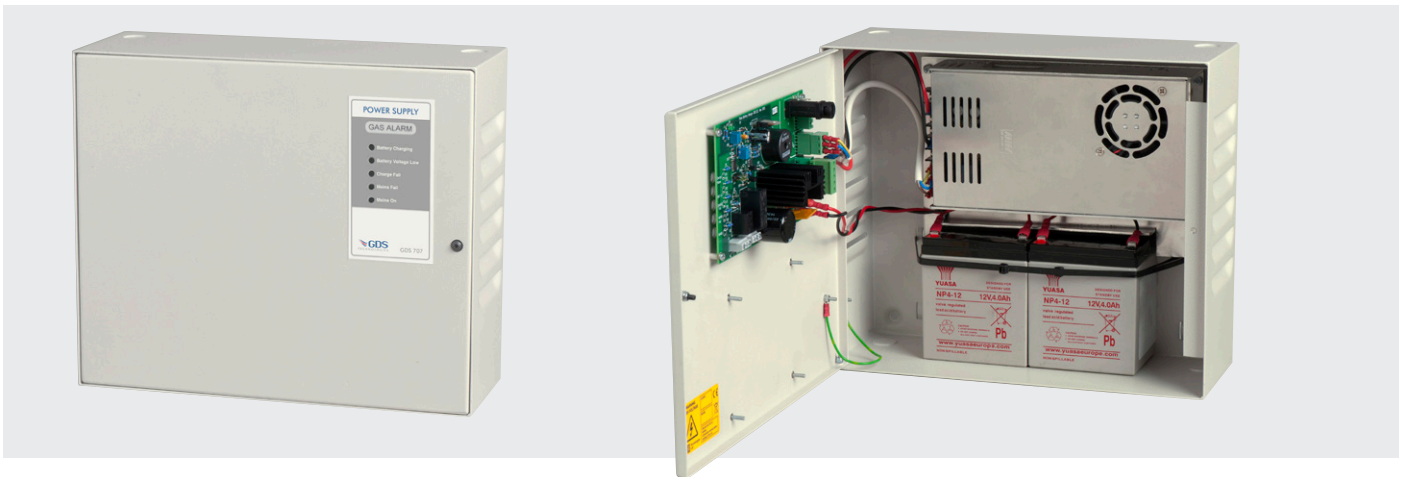


GDS 707

POWER SUPPLY PULSED BATTERY CHARGER



Specification Sheet
ref C1293Dv1



The GDS 707 provides and maintains a DC supply to the gas detection system, no other supply should be connected to the system.

Mains Input 100–230Vac (terminals J2)

Output 27V Nominal (26~31.5Vdc adjustable)

Caution: gas alarm systems should operate on this single supply only.

Rated Current 0~11.7A (316W)

Frequency Range 47~63 Hz

Standard Internal Battery 24Vdc 4Ah – others available (terminals B+J5 / B-J6)

Protection short circuit, overload, over voltage, over temperature (shutdown and automatic recovery)

Ripple and Noise (max.) 200mVp–p

Operating Temperature -15°C to +50°C

Battery Charging LED flashes to show when the battery is charging. The duration of the flashes changes according to how close the battery voltage is to its float value and will be dim and infrequent when fully charged

Battery Voltage Low LED will illuminate when the battery voltage is low (at approximately 20 volts)

Charge Fail LED shows that battery charging has failed which may be because mains has also failed but could be because the battery has failed or is disconnected

Mains Fail LED indicates mains power has been lost

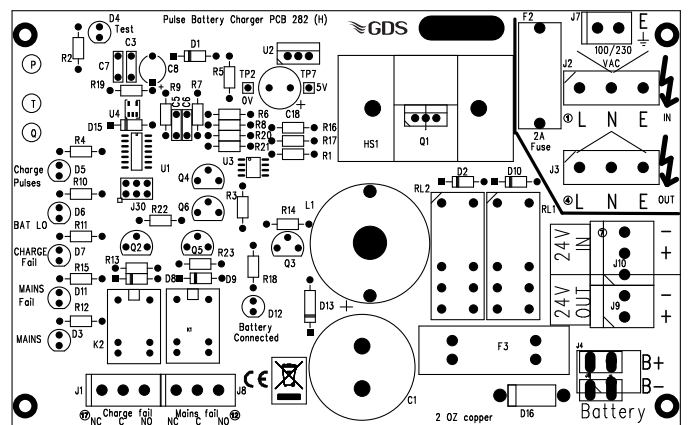
Mains On LED is on when mains power is detected

Test LED (interior) indicates the version of software at power up with flashes and thereafter shows which of 6 possible states the charger is operating in

Charge Fail Relay SPCO rated @ 1A–115Vac – Connection via terminal J1

Mains Fail Relay Normally energised SPCO rated @ 1A–230Vac – Connection via terminal J8

State	Test LED Consecutive Flashes	Description
1	☀	Battery Low
2	☀ ☀	Battery Charging
3	☀ ☀ ☀	Measuring Battery Condition
4	☀ ☀ ☀ ☀	Battery Fail
5	☀ ☀ ☀ ☀ ☀	Battery Voltage Too High
6	☀ ☀ ☀ ☀ ☀	Battery Discharging



Material Mild steel 1.2mm

Finish Powder coat – texture

Colour BS00A01 Ash Grey

Dimensions W314 x H264 x D116mm

Cable Entry 20mm knock-out entry top/bottom/rear

IP Rating IP52

Mounting 264x237mm Footprint with 4 M5 Holes

Weight 4.9Kg, 8.0Kg (with batteries)

GDS 707

POWER SUPPLY PULSED BATTERY CHARGER

