

Hy-Guard™

Effortless, Continuous
Hydrogen Monitoring
for Battery Systems

Prevention Starts with Detection

H2scan®
Advanced Hydrogen Sensing



Eliminate Risk. Increase Safety.

Lead-acid and Ni-Cad batteries dissipate hydrogen that can ignite if left unchecked. Hy-Guard monitors and reports rising hydrogen levels 24/7, so you can detect problems before they become disasters.



- + High Tech
- + Low Maintenance
- + Easy Installation
- + Long Life

DRIFT HAPPENS

Hy-Guard's non-consumable dual sensors don't require downtime. While one sensor detects, the other automatically adjusts for drift every 12 hours, guaranteeing round-the-clock accuracy.



**24/7
Detection
Perfection
with **AUTO-FOCUS****

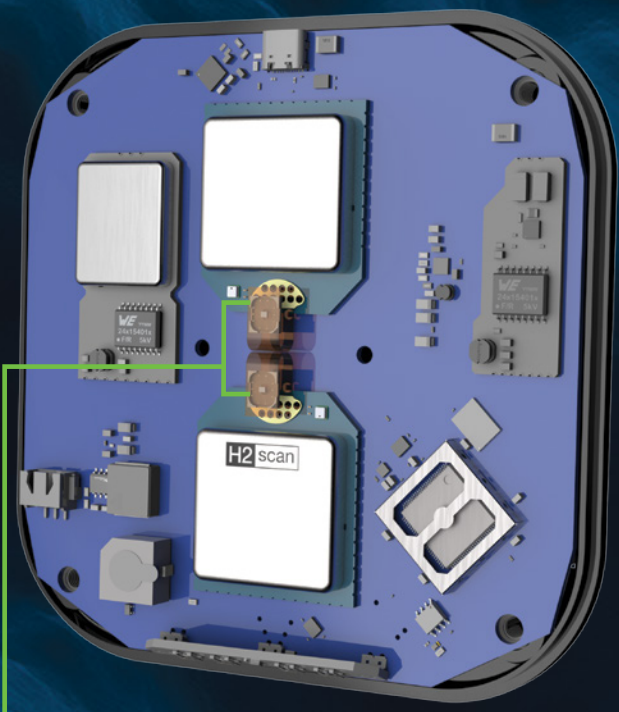
A Layered Approach to Hydrogen Protection

DECADES OF DETECTION



- Engineered to last the life of your battery
- 10-year calibration guarantee
- Rugged, non-conductive housing

ADVANCED SENSING TECHNOLOGY



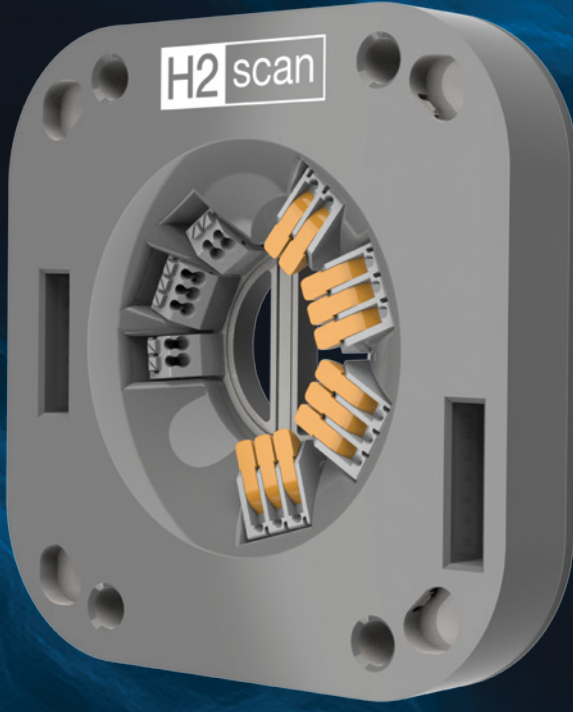
- Solid-state, ultra-low power sensor
- No cross-sensitivities; no false alarms
- Only detect the real threat: hydrogen

SMALL FOOTPRINT, BIG PROTECTION



- Robust electronics design
- 85 dB alarm buzzer
- Vibrant LED's you can't miss

CONNECTIVITY MADE EASY



- AC and/or DC powered
- 4–20 mA analog output
- 3 Form C relays (2 alarm / 1 fault)

CONVENIENT INSTALLATION



- Install as easy as 1, 2, 3
- Designed for standard 2100 J box
- Screwdriver-only installation

Install Anywhere

However your battery cabinet or room is designed, Hy-Guard installs in minutes.



PUNCH OUT



JUNCTION BOX



WALL MOUNT*



DIN RAIL*



SURFACE MOUNT*

*requires additional universal adapter plate accessory

Hy-Guard™

Sensor Performance

Accuracy	±0.3% H ₂ ; Range 0–2%
Response Time	60 seconds to 1% alarm
LDL	0.4% H ₂
Resolution	1 ppm
Compatibility	Air, non-condensing humidity, hydrogen

Hy-Guard Specifications

Humidity	0–95% RH, non-condensing
Ambient Temperature	0–50 °C
Storage Temperature	-20–60 °C
Pressure	0.8–1.2 ATM (absolute pressure)
Input Power	AC: 85–264 V DC: 15–60 V
Wire Gauge	AC: 12–24 AWG DC: 14–20 AWG
Dimensions (L x W x H)	5.1" x 5.1" x 2.1"



27215 Turnberry Lane | Unit A
Valencia, CA 91355

+1 661-775-9575
hello@h2scan.com

h2scan.com